



Search

Name Search

- ◇ State Search
- ◇ Advanced Search
- ◇ Search Help

PLANTS Topics

- ▶ Alternative Crops
- ▶ Characteristics
- ▶ Classification
- ▶ Culturally Significant
- ▶ Distribution Update
- ▶ Fact Sheets & Plant Guides
- ▶ Invasive and Noxious Weeds
- ▶ Plant Materials Publications
- ▶ Threatened & Endangered
- ▶ Wetland Indicator Status

Image Gallery

- ▶ 30,000+ Plant Images
- ▶ Submit Your Digital Images

Download

- ▶ Complete PLANTS Checklist

You are here: [Home](#) / [PLANTS Profile](#)

[Printer-Friendly](#) / [Plug-Ins](#)

PLANTS Profile

Cichorium intybus L. chicory

Symbol: CIIN
 Group: Dicot
 Family: Asteraceae
 Duration: Biennial
 Perennial
 Growth Habit: Forb/herb
 Native Status: L48 I
 CAN I
 SPM I

Common Names:
 French endive
 succory

Click on the image below to enlarge it and download a high-resolution JPEG file.



Steve Hurst. Provided by ARS Systematic Botany and Mycology Laboratory. United States, NV. [Usage Requirements](#).

More Information:

- [Characteristics](#)
- [Classification](#)
- [Source & Reference](#)

- ▶ [State PLANTS Checklist](#)
- ▶ [Advanced Search Download](#)
- ▶ [Symbols for Unknown Plants](#)
- ▶ [NRCS State GSAT Lists](#)
- ▶ [NRCS State Plants Lists](#)
- ▶ [PLANTS Posters](#)

Related Tools

- ▶ [Crop Nutrient Tool](#)
- ▶ [Ecological Site Information System](#)
- ▶ [Plant Materials Web Site](#)
- ▶ [Other NRCS Tech Resources](#)
- ▶ [VegSpec](#)

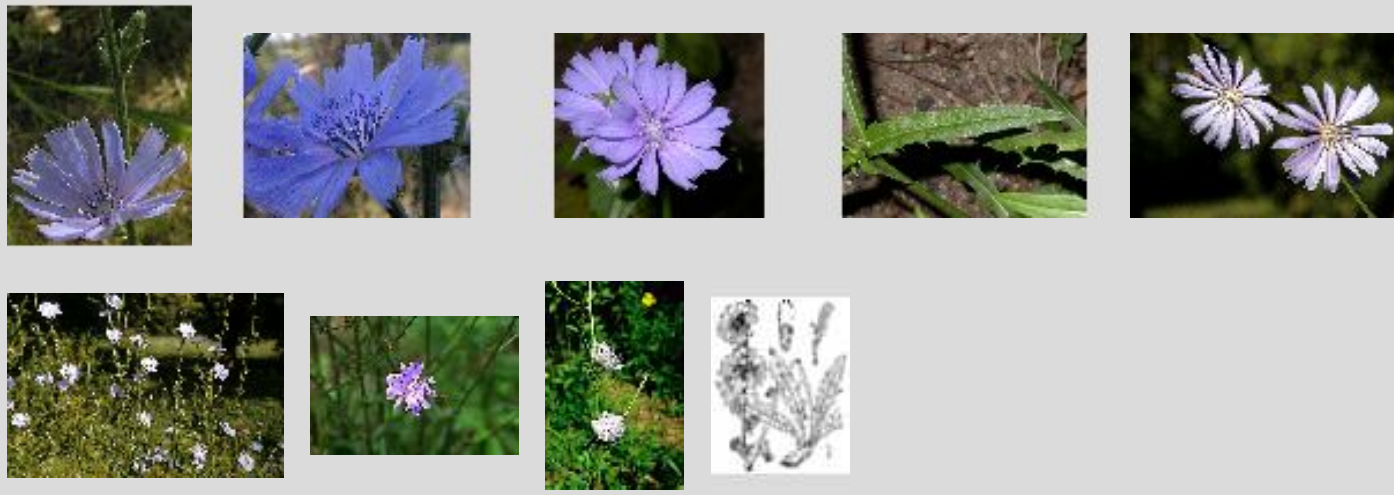
Plant Links

- ▶ [PLANTS Links](#)

Images:

Cichorium intybus L.

Click on a thumbnail to view an image, or [see all the *Cichorium* thumbnails at the PLANTS Gallery](#)



Synonyms:

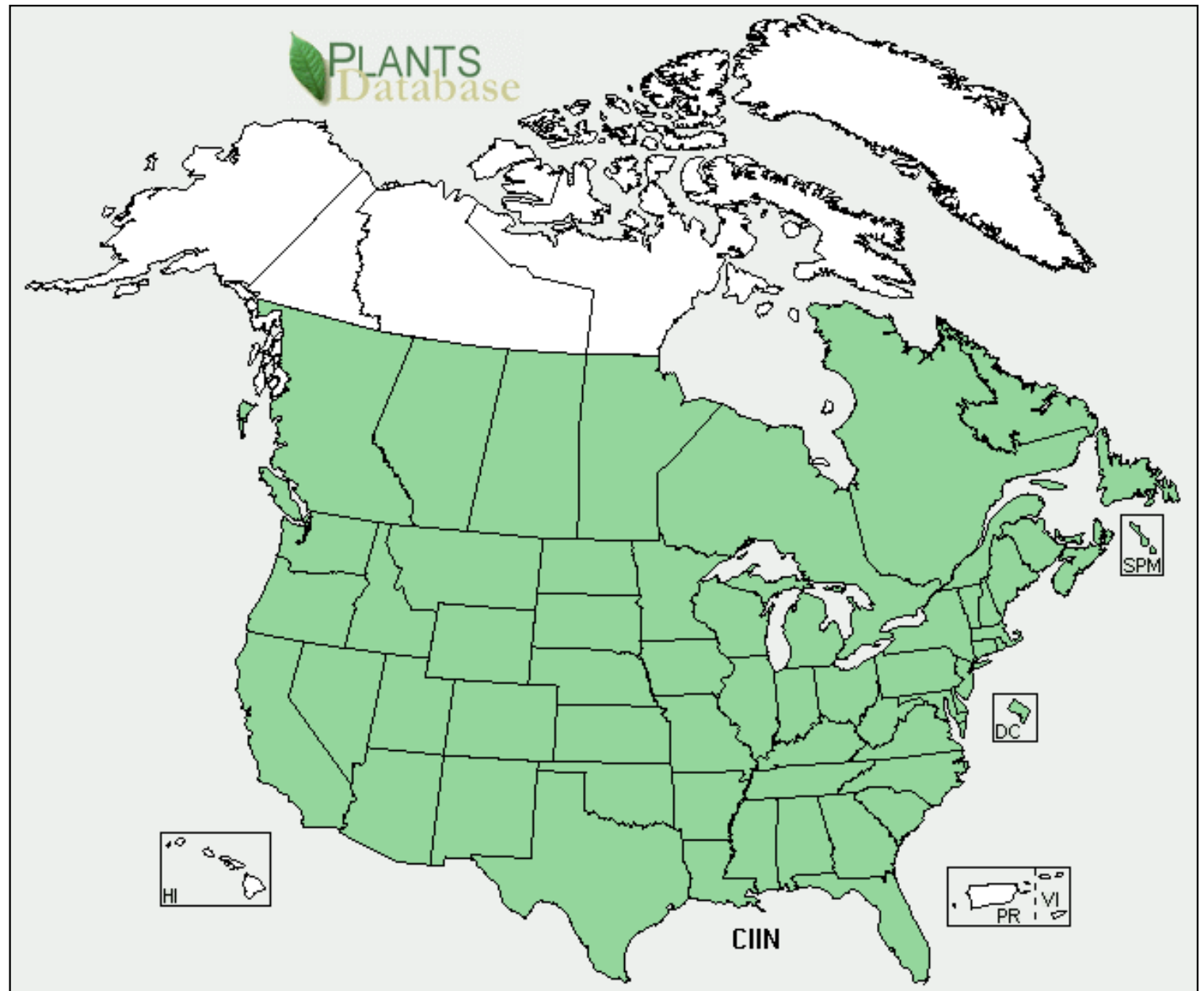
Cichorium intybus L.

CIINF *Cichorium intybus* L. var. *foliosum* Hegi

CIINS2 *Cichorium intybus* L. var. *sativum* (Bisch.) Janch.

Distribution:

Cichorium intybus L.



[View Native Status](#)

■ Present □ Absent

See US county distributions (when available) by clicking on the map or the state links below:

[AL](#), [AR](#), [AZ](#), [CA](#), [CO](#), [CT](#), [DC](#), [DE](#), [FL](#), [GA](#), [IA](#), [ID](#), [IL](#), [IN](#), [KS](#), [KY](#), [LA](#), [MA](#), [ME](#), [MI](#), [MN](#), [MO](#), [MT](#), [NC](#), [ND](#), [NE](#), [NH](#), [NJ](#), [NM](#), [NV](#), [NY](#), [OH](#), [OK](#), [OR](#), [PA](#), [RI](#), [SC](#), [SD](#), [TN](#), [TX](#), [UT](#), [VA](#), [VT](#), [WA](#), [WI](#), [WV](#), [WY](#)

Related Taxa:*Cichorium intybus* L.View [477 genera in Asteraceae](#), [2 species in Cichorium](#)**Classification:***Cichorium intybus* L.

Click on a scientific name below to expand it in the PLANTS Classification Report.

Kingdom	Plantae – Plants
Subkingdom	Tracheobionta – Vascular plants
Superdivision	Spermatophyta – Seed plants
Division	Magnoliophyta – Flowering plants
Class	Magnoliopsida – Dicotyledons
Subclass	Asteridae –
Order	Asterales –
Family	Asteraceae – Aster family
Genus	Cichorium L. – chicory
Species	Cichorium intybus L. – chicory

Noxious Weed Information:*Cichorium intybus* L.

This plant is listed by the U.S. federal government or a state. Common names are from state and federal lists. Click on a place name to get a complete noxious weed list for that location, or click here for a composite list of all [Federal and State Noxious Weeds](#).

Colorado:

chicory C list (noxious weeds)

U.S. Weed Information:*Cichorium intybus* L.

blue sailors
 chicory
 coffeeweed
 succory

This plant can be weedy or invasive according to the authoritative sources noted below. This plant may be known by one or more common names in different places, and some are listed above. Click on an acronym to view each weed list, or click here for a composite list of [Weeds of the U.S.](#)

STATE	Assorted authors. 200_. <i>State noxious weed lists for 46 states</i> . State agriculture or natural resource departments.
KY	Haragan, P.D. 1991. <i>Weeds of Kentucky and adjacent states: a field guide</i> . The University Press of Kentucky. Lexington, Kentucky. 278pp.
N'EAST	Uva, R.H., J.C. Neal, & J.M. DiTomaso. 1997. <i>Weeds of the Northeast</i> . Cornell University Press. Ithaca, New York. 397pp.
NE&GP	Stubbendieck, J., G.Y. Friisoe, & M.R. Bolick. 1994. <i>Weeds of Nebraska and the Great Plains</i> . Nebraska Department of Agriculture, Bureau of Plant Industry. Lincoln, Nebraska. 589pp.
SEEPPC	Southeast Exotic Pest Plant Council. 1996. <i>Invasive exotic pest plants in Tennessee</i> (19 October 1999). Research Committee of the Tennessee Exotic Pest Plant Council. Tennessee.
SWSS	Southern Weed Science Society. 1998. <i>Weeds of the United States and Canada</i> . CD-ROM. Southern Weed Science Society. Champaign, Illinois.
WSWS	Whitson, T.D. (ed.) et al. 1996. <i>Weeds of the West</i> . Western Society of Weed Science in cooperation with Cooperative Extension Services, University of Wyoming. Laramie, Wyoming. 630pp.

More Accounts and Images:*Cichorium intybus* L.

View [photographs](#) from CalPhotos.

View [species account](#), [photographs](#), and [distribution](#) from USF Atlas of Florida Vascular Plants.

View [species account](#) from ARS Germplasm Resources Information Network (GRIN).

View [taxonomic account](#) from Integrated Taxonomic Information System (ITIS) for ITIS Taxonomic Serial Number 36763.

View [species account](#) from Kemper Center for Home Gardening.

View [species account](#) from Native American Ethnobotany (University of Michigan - Dearborn).

View [photographs and distribution](#) from University of Tennessee Herbarium.

View [species account, photographs, and distribution](#) from U. of Washington Burke Museum.

View [species account and photographs](#) from University of Wisconsin - Stevens Point Freckmann Herbarium.

Related Web Sites:

Cichorium intybus L.

[Atlas of Florida Vascular Plants: dicot pick list](#)

[British Columbia Ag. & Food, Crop Protection Program](#)

[Medicinal library line drawing](#)

[Medicinal library lithograph](#)

Time Generated: 01/24/2008 03:02 PM MST

[PLANTS Home](#) | [USDA.gov](#) | [NRCS](#) | [Site Map](#) | [Policies and Links](#)
[Accessibility Statement](#) | [Privacy Policy](#) | [Non-Discrimination Statement](#)